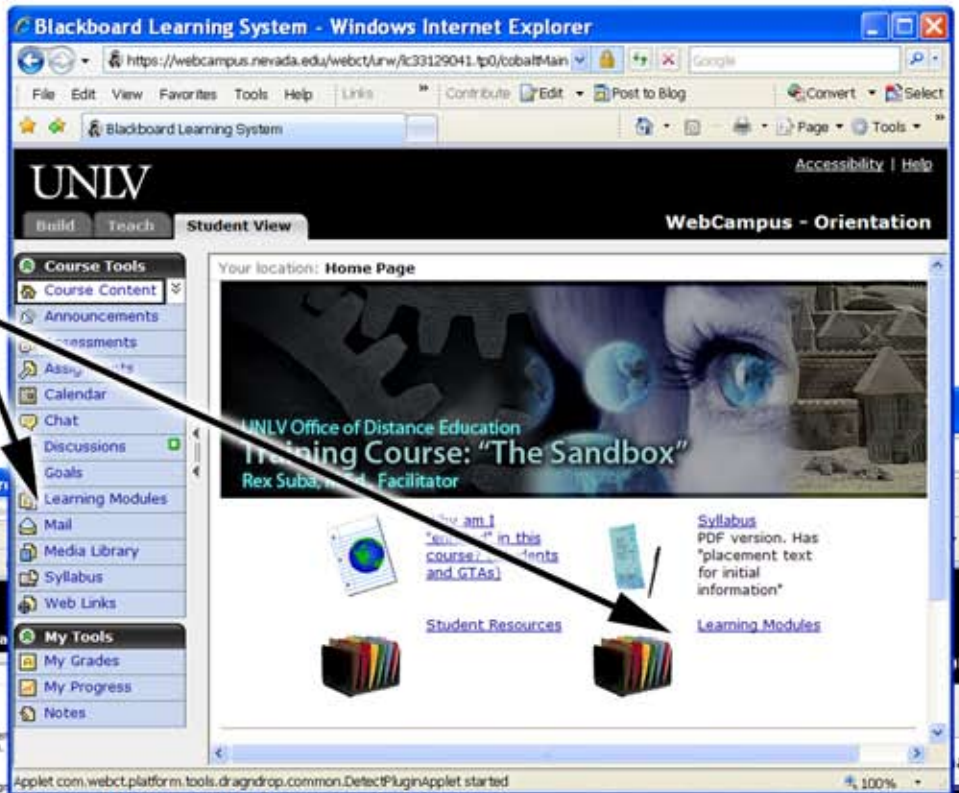
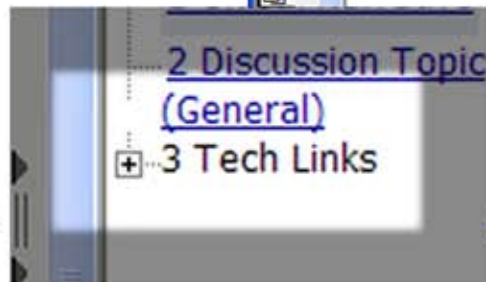


# Learning Module...

Depending on your instructors' plan for navigating a course, you may access the collections or instructional units (aka LMs) either from the "Course Tools" menu on the left *or* you may have folders on the start folder, etc.



Remember to "unfurl" items in a WebCampus Learning Module by clicking on an available "+" (plus sign). The + indicates that additional content is waiting to be revealed.



If you feel that the list is too long for the moment, click on the "-" and it will change back to a "+".

